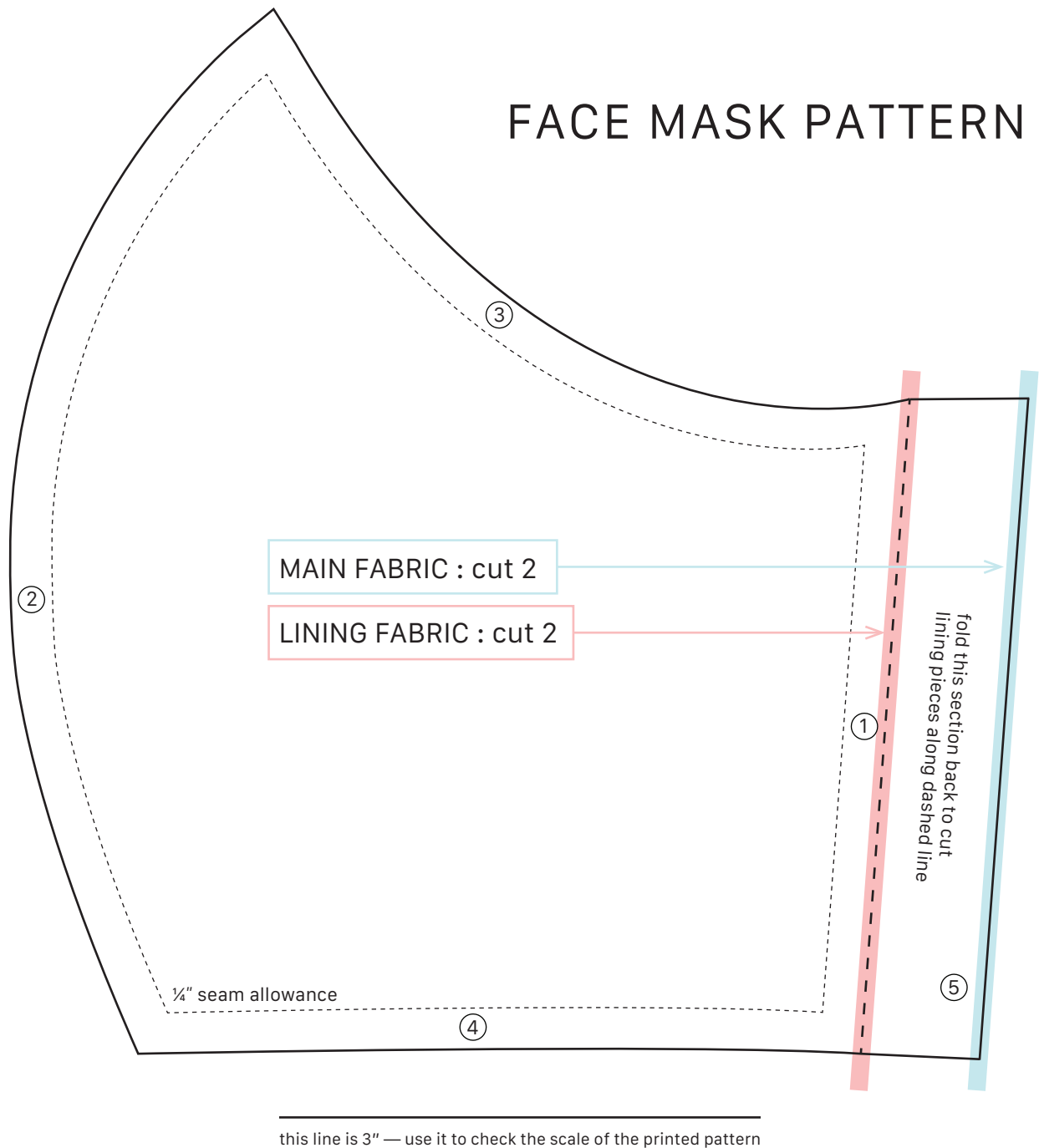


FACE MASK PATTERN



MATERIALS —

- main fabric - at least 8" x 12"
- lining fabric - at least 8" x 12"
- 26" elastic cord or 1/8" wide elastic band

FABRIC NOTES —

- we have learned that sturdy woven cotton is the best fabric to use.
- jersey fabrics have too much space between knit stitches which makes them less effective in filtering germs.
- if using a fabric with any pattern, orient it horizontally.
- masks should be washed and sterilized, so laundering or drying fabric beforehand will prevent shrinkage after they are assembled.

Sewing steps can be found at www.statethelabel.com/pages/masks
Email sales@statethelabel.com if you have any questions! Happy sewing :)